

ROBINSON GROVE



LOCAL STRUCTURE PLAN 2: LANDSCAPE MASTERPLAN



LANDSCAPE ARCHITECTS
LEVEL 1 278 RAILWAY PARADE WEST LEEDERVILLE 6007
T: (08) 9388 9566 E: mail@plane.com.au



LEGEND

- 01 Living stream watercourse feeds lake/wetland system, (already constructed) and to be retained
- 02 Sedge species along waterline to provide habitat and help filter water for higher quality.
- 03 Circulating dual use red asphalt pathways.
- 04 Open turf for active or passive recreation, and provide clear sightlines into POS and low fuel buffers.
- 05 Shade structure with picnic seating and in locations play equipment. Locations provide focal meeting node and themes to reflect homestead architectural style.
- 06 Maintenance or DFES access.
- 07 Proposed bio filtration drainage basins as per LWMS.
- 08 Pedestrian Footbridges provide further access for walking/bike riding routes.
- 09 Existing trees & vegetation to be retained. Weed removal and fuel management with low fuel rehab planting where required.
- 10 Pedestrian footpaths located at road level to provide views over the regional open space.
- 11 Helena River and associated existing trees and vegetation to be maintained. Refer to foreshore management plan for details.
- 12 Street trees to provide shady streets, consistent with approved street tree masterplan species. Spacing of trees subject to bush fire management requirements.
- 13 Rehabilitation planting with native, resilient and low bush fire threat species. Revegetation to areas where earthworking is required to soften slopes, which vary from 1:4 to 1:6 gradient. Refer Foreshore Management Plan for details.

ROBINSON GROVE
PREPARED FOR SATTERLEY

LOCAL STRUCTURE PLAN 2: LANDSCAPE INFORMATION
SEPTEMBER 2025

JOB NO. 2409103
1:2500 @ A1

C1.102
0 50 100 200 300 500m
REV A

COPYRIGHT THIS DOCUMENT IS AND
SHALL REMAIN THE PROPERTY OF
PLAN E



LANDSCAPE ARCHITECTS
LEVEL 1 278 RAILWAY PARADE WEST LEEDERVILLE 6007
T: (08) 9388 9566 E: mail@plane.com.au



LEGEND

- Approved Local Structure Plan Boundary.
- Regional Open Space Boundary
- Western Power Easement
- Helena River - Swan River Trust
- Public Open Space - to be vested to Shire of Mundaring
- 01 Approved Landscape Design - Living Stream POS Areas, Shire of Mundaring
- 02 Constructed Stables POS, further approvals with Shire of Mundaring,
- 03 Partially constructed stage 2 POS, further approvals with Shire of Mundaring.
- 04 Amphitheatre POS, concept design supported by DBCA & Shire of Mundaring. Further formal approvals required.

ROBINSON GROVE
PREPARED FOR SATTERLEY

LOCAL STRUCTURE PLAN 2: LANDSCAPE INFORMATION
SEPTEMBER 2025

JOB NO. 2409103
1:2500 @ A1

C1.103
0 50 100 200 300 500m
REV A

COPYRIGHT THIS DOCUMENT IS AND
SHALL REMAIN THE PROPERTY OF
PLAN E



LANDSCAPE ARCHITECTS
LEVEL 1 278 RAILWAY PARADE WEST LEEDERVILLE 6007
T: (08) 9388 9566 E: mail@plane.com.au



LEGEND

- Existing Approved Structure Plan Boundary
- Existing open wetlands
- Helena River & associated vegetation, assume class A forest, includes 9.57ha riparian rehabilitation
- Further existing trees & vegetation to be retained, identified from aerial imagery.
- Surveyed existing trees to be retained.
- Red asphalt dual use paths (bike & pedestrian).
- New pedestrian concrete paths.
- Maintenance or DFES access
- Irrigated and managed native shrub planting.
- Irrigated and managed roll on turf
- Proposed rehabilitation planting, to managed landscape classification
- Existing natural depressions that seasonally hold water.
- Proposed seasonal wetlands, bio retention or wetland associated drainage system with native sedge planting to assist with nutrient stripping.

ROBINSON GROVE
PREPARED FOR SATTERLEY

LOCAL STRUCTURE PLAN 2: LANDSCAPE INFORMATION
SEPTEMBER 2025

JOB NO. 2409103
1:2500 @ A1

C1.104
0 50 100 200 300 500m
REV A

COPYRIGHT THIS DOCUMENT IS AND
SHALL REMAIN THE PROPERTY OF
PLAN E



LANDSCAPE ARCHITECTS
LEVEL 1 278 RAILWAY PARADE WEST LEEDERVILLE 6007
T: (08) 9388 9566 E: mail@plane.com.au

PROPOSED



EXISTING



ROBINSON GROVE
PREPARED FOR SATTERLEY

LOCAL STRUCTURE PLAN 2: LANDSCAPE INFORMATION
SEPTEMBER 2025

JOB NO. 2409103
1:2500 @ A1

C1.105
0 50 100 200 300 500m
REV A

COPYRIGHT THIS DOCUMENT IS AND
SHALL REMAIN THE PROPERTY OF
PLAN E



LANDSCAPE ARCHITECTS

LEVEL 1 278 RAILWAY PARADE WEST LEEDERVILLE 6007
T: (08) 9388 9566 E: mail@plane.com.au



EXISTING



ROBINSON GROVE
PREPARED FOR SATTERLEY

LOCAL STRUCTURE PLAN 2: LANDSCAPE INFORMATION
SEPTEMBER 2025

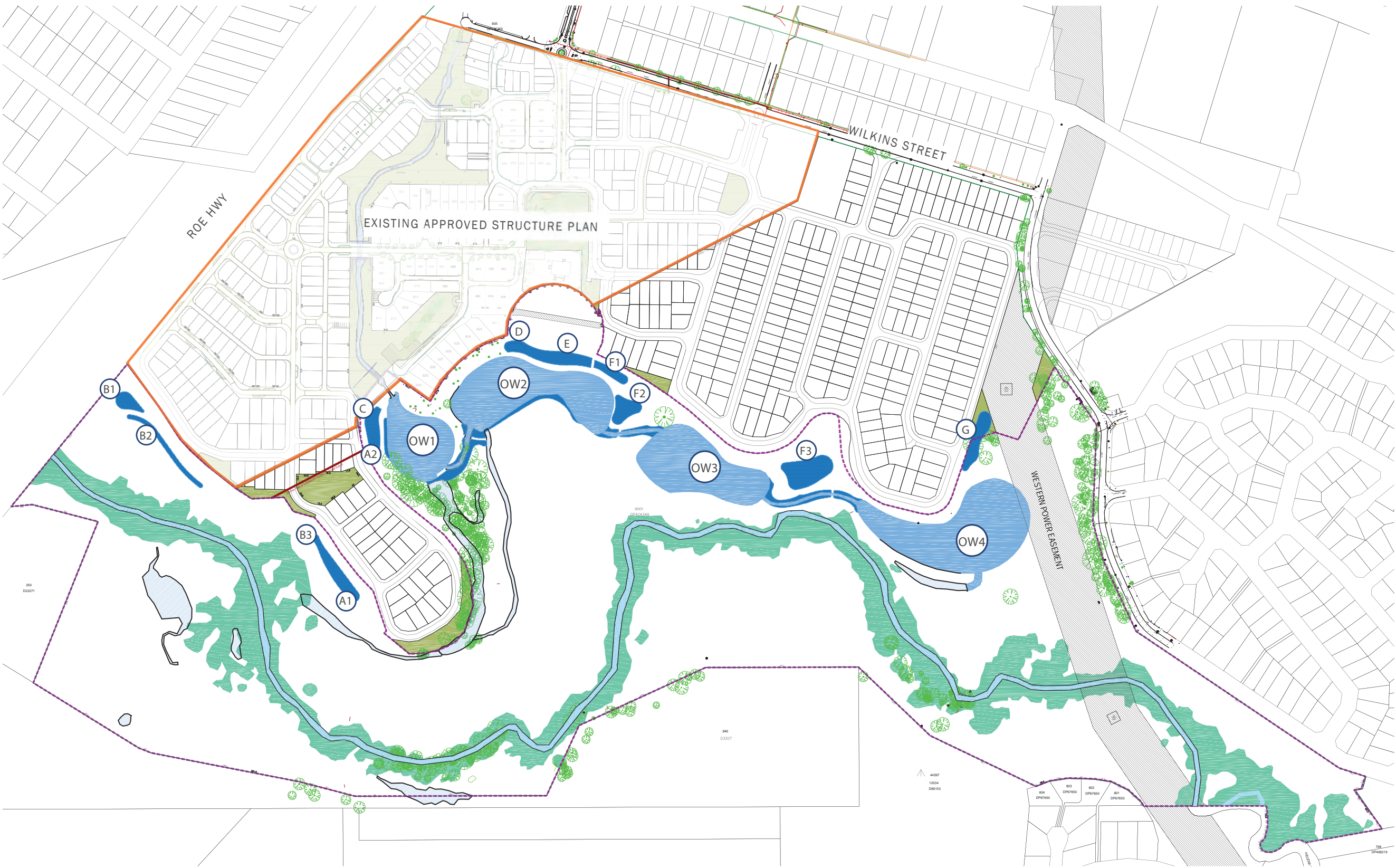
JOB NO. 2409103
1:2500 @ A1

C1.106
0 50 100 200 300 500m
REV A

COPYRIGHT THIS DOCUMENT IS AND
SHALL REMAIN THE PROPERTY OF
PLAN E



LANDSCAPE ARCHITECTS
LEVEL 1 278 RAILWAY PARADE WEST LEEDERVILLE 6007
T: (08) 9388 9566 E: mail@plane.com.au



LEGEND

- Existing Approved Structure Plan Boundary
- Regional Open Space boundary
- Existing Helena River Water Way - to be managed by DBCA/Swan River Trust
- Existing open wetlands (with LWMS No.)
- Existing natural depressions that seasonally hold water.
- Proposed seasonal wetlands, bio retention or wetland associated drainage system with native sedge planting to assist with nutrient stripping, (with UWMP catchment No.).
- Helena River & associated vegetation, assume class A forest, includes 9.57ha riparian rehabilitation
- Existing trees surveyed and identified for retention.

ROBINSON GROVE
PREPARED FOR SATTERLEY

LOCAL STRUCTURE PLAN 2: LANDSCAPE INFORMATION
SEPTEMBER 2025

JOB NO. 2409103
1:2500 @ A1

C1.107
0 50 100 200 300 500m
REV A

COPYRIGHT THIS DOCUMENT IS AND
SHALL REMAIN THE PROPERTY OF
PLAN E



LANDSCAPE ARCHITECTS
LEVEL 1 278 RAILWAY PARADE WEST LEEDERVILLE 6007
T: (08) 9388 9566 E: mail@plane.com.au

BILLARDIA FUSIFORMIS



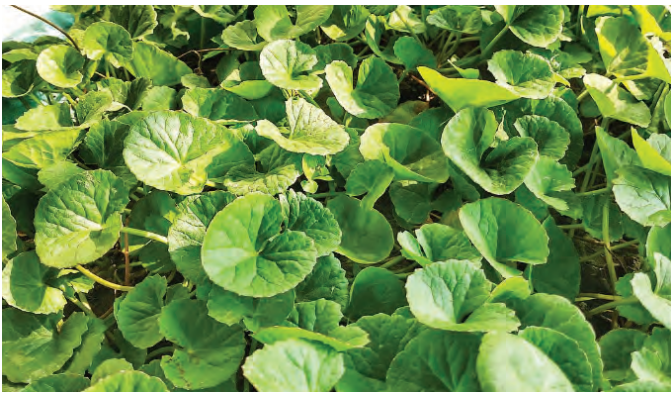
DAMPIERA LINEARIS



FICINIA NODOSA



LEPIDOSPERMA SQUAMATUM



CENTELLATA ASIATICA



JUNCUS CAESPITICIUS



LEPIDOSPERMA LATERITA



LOMANDRA SERICEA



ALLOCASUARINA FRASERIANA



EUCALYPTUS RUDIS



EUCALYPTUS CAMALDULENSIS



MELALEUCA QUINQUINERVIA

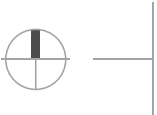
ROBINSON GROVE
PREPARED FOR SATTERLEY

LOCAL STRUCTURE PLAN 2: LANDSCAPE INFORMATION
SEPTEMBER 2025

JOB NO. 2409103
1:2500 @ A1

C1.108
0 50 100 200 300 500m
REV A

COPYRIGHT THIS DOCUMENT IS AND
SHALL REMAIN THE PROPERTY OF
PLAN E



LANDSCAPE ARCHITECTS

LEVEL 1 278 RAILWAY PARADE WEST LEEDERVILLE 6007
T: (08) 9388 9566 E: mail@plane.com.au



LEGEND

- Existing Approved Structure Plan Boundary
- Existing Helena River Water Way - to be managed by DBCA/Swan River Trust
- Helena River & associated vegetation, assume class A forest, includes 9.57ha riparian rehabilitation
- Further existing trees and vegetation to be retained.
- Proposed rehabilitation planting to managed landscape classification - low fuel groundcovers. Planted on 1:4-1:6 slopes and covers approximately 4.18Ha.
- Proposed riparian re-vegetation planting to approximately 8.71Ha, to be maintained by developer (2yrs) and handed to DBCA.
- Proposed rehabilitation planting to Class A Forest classification, approximately 10.09Ha

ROBINSON GROVE
PREPARED FOR SATTERLEY

LOCAL STRUCTURE PLAN 2: LANDSCAPE INFORMATION
SEPTEMBER 2025

JOB NO. 2409103
1:2500 @ A1

C1.109
0 50 100 200 300 500m
REV A

COPYRIGHT THIS DOCUMENT IS AND
SHALL REMAIN THE PROPERTY OF
PLAN E



LANDSCAPE ARCHITECTS
LEVEL 1 278 RAILWAY PARADE WEST LEEDERVILLE 6007
T: (08) 9388 9566 E: mail@plane.com.au



LEGEND

- Existing Structure Plan Boundary - street tree species approved by Shire of Mundaring
- Existing Tress to be retained
- Proposed trees installed with front yard packages:
 - Angophora costata
 - Eucalyptus torquata
 - Eucalyptus platypus platypus
 - Agoinis flexuosa
 - Melaleuca leucadendra

ROBINSON GROVE
PREPARED FOR SATTERLEY

LOCAL STRUCTURE PLAN 2: LANDSCAPE INFORMATION
SEPTEMBER 2025

JOB NO. 2409103
1:2500 @ A1

C1.1010
0 50 100 200 300 500m
REV A

COPYRIGHT THIS DOCUMENT IS AND
SHALL REMAIN THE PROPERTY OF
PLAN E



LANDSCAPE ARCHITECTS

LEVEL 1 278 RAILWAY PARADE WEST LEEDERVILLE 6007
T: (08) 9388 9566 E: mail@plane.com.au

ANGOPHORA COSTATA



AGONIS FLEXUOSA



EUC TORQUATA



MELALEUCA LEUCADENDRA



EUC PLATYPUS PLATYPUS



EUC ERYTHROCORYS



MELALEUCA PREISSIANA

CONOSTYLIS CANDICANS



GREVILLEA GOLD RUSH/CLUSTER



KENNEDIA COCCINEA



KENNEDIA PROSTRATA



ANIGOZANTHOS BUSH PEARL



BEAUFORTIA ELEGANS



CALLISTEMON PERTH PINK



PATTERSONIA OCCIDENTALIS

